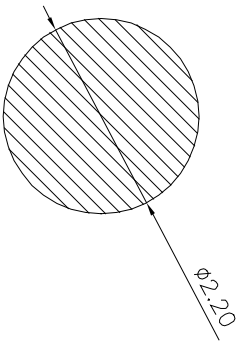
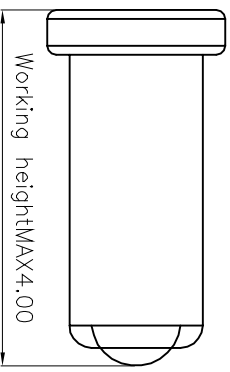
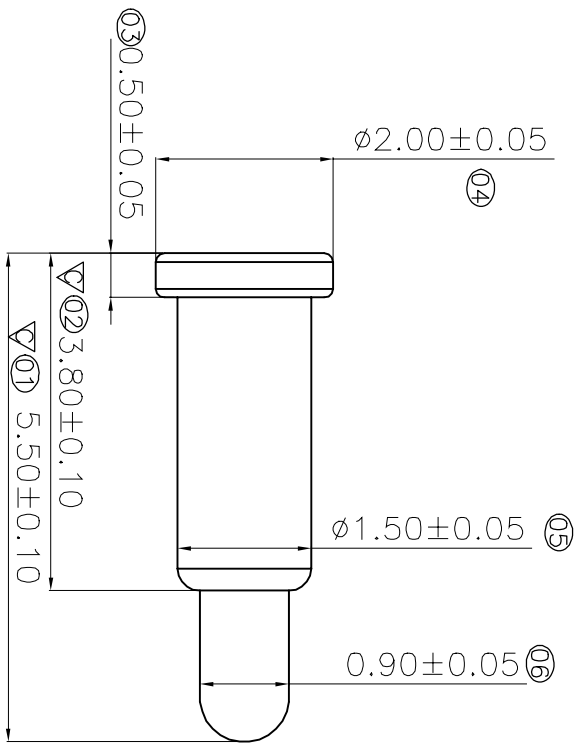


NOTE:

1. Material
.Plunger: Brass
2. Plating
.Contact surface: 1u" minimum Au over 80~100u" Ni
3. Electrical
.Rated Current & Voltage: DC 12V; AC 1~1.65A, 24H
.Contact Resistance: 25mΩ maximum
4. RoHS COMPLETED PRODUCT.
5. Elasticity: Stroke 0mm: 10gf Stroke 0.25mm: 50gf Stroke 1.50mm
(or fully compressed): 100~150gf
6. Life (Million): stroke range Max 0.5~4mm, 根据Pin的总类不一样Max. Stroke 10000次 Touch down后重量变化 0.5gf以内 Creep变形最小化
7. Temperature: -40度~150度
8. Use: 电子摄影; 通电; 手机; 天线; 接地; 电池接触。



PCB LAYOUT

Layout Tolerance: $\pm 0.20\text{mm}$

DIM	TOL	DIM	TOL
X	± 0.20	X	3°
X.X	± 0.15	X.X	
X.XX	± 0.10	X.XX	
X.XXX		X.XXX	

		深圳市泰科汉泽精密电子有限公司 Tyco Hancorn Precision Electronics	
DRAW NO.:	2012.02.13	DATE:	2012.02.13
DESIGN:	譚立強	MATERIAL:	Brass C3604
CHECK:		FINISH:	Au1~3u", Ni, 80~120u"
REVIEW:		FILE:	
		P/N:	SEE TABLE
		REV.:	A1
		SCALE:	N/A
		UNIT:	mm
		SHEET:	1/1
		DRAW NAME: SEE TABLE	